

DATASHEET



# COMPOSE

« Networks Made Smart »



Compose is an Ekinops brand that aims to add value to networks through a software-defined approach. In the context of Enterprise Access Networks, Compose augments networks with, amongst others, virtualized Services, SD-WAN, and security. Compose helps service providers to broaden their Business Services portfolio very simply.



## COMPOSE

Compose Alliances

Compose ProServ

Compose Manager



**DIRECTOR &**



**ONEMANAGE**



- API, Multi-tenant, Multi-Tiers
- Remote configuration (ZTP)
- Analytics, Control Plane

**OneOS6**

Compose Services



**SD-WAN**  
Xpress



**VNF**  
Store



OneOS6 built-in or Ekinops VNFs

32 certified 3<sup>rd</sup> Party VNFs

- Ekinops Services OneOS6 Built-in (Routing, FW, SBC, SD-WAN, etc.)
- Catalog of 3rd party VNFs, extensible

Compose Middleware



**OneOS6**  
LIM



- OneOS6 for all platforms
- LIM (OneOS- extension made for uCPE)



Branch Office Data Routers



Branch Office + Data Routers



- OneAccess OVP
- Dell VEP
- 3<sup>rd</sup> Party White Boxes



Mid-Range Data Routers



High-Density Voice + Data Routers



Ethernet Access Devices

Data Products

Voice Products

uCPEs

## Use Cases

### Virtualization for Appliance Consolidation



**Challenge:**

Reduce TCO of the Enterprise Edge by reducing number of appliances and simplify operation.

**Solution:**

Light uCPE with **Compose Middleware** OneOS6-LIM, **Compose services** vRouter, vFW, vSD-WAN packaged on OneAccess OVP platform or 3<sup>rd</sup> party vendors VNFs (no lock-in). A customer IT specific VNF can be certified in the package.

### Edge Computing / IoT



**Challenge:**

Reduce latency and load time to access Cloud services and improve customer experience (QoE).

**Solution:**

Powerful uCPE with **Compose Middleware** OneOS6-LIM, **Compose services** vRouter, vFW and "Rancher" VNF to support containers migration from Cloud to Edge while guaranteeing local data management.

### SD-WAN Services



**Challenge:**

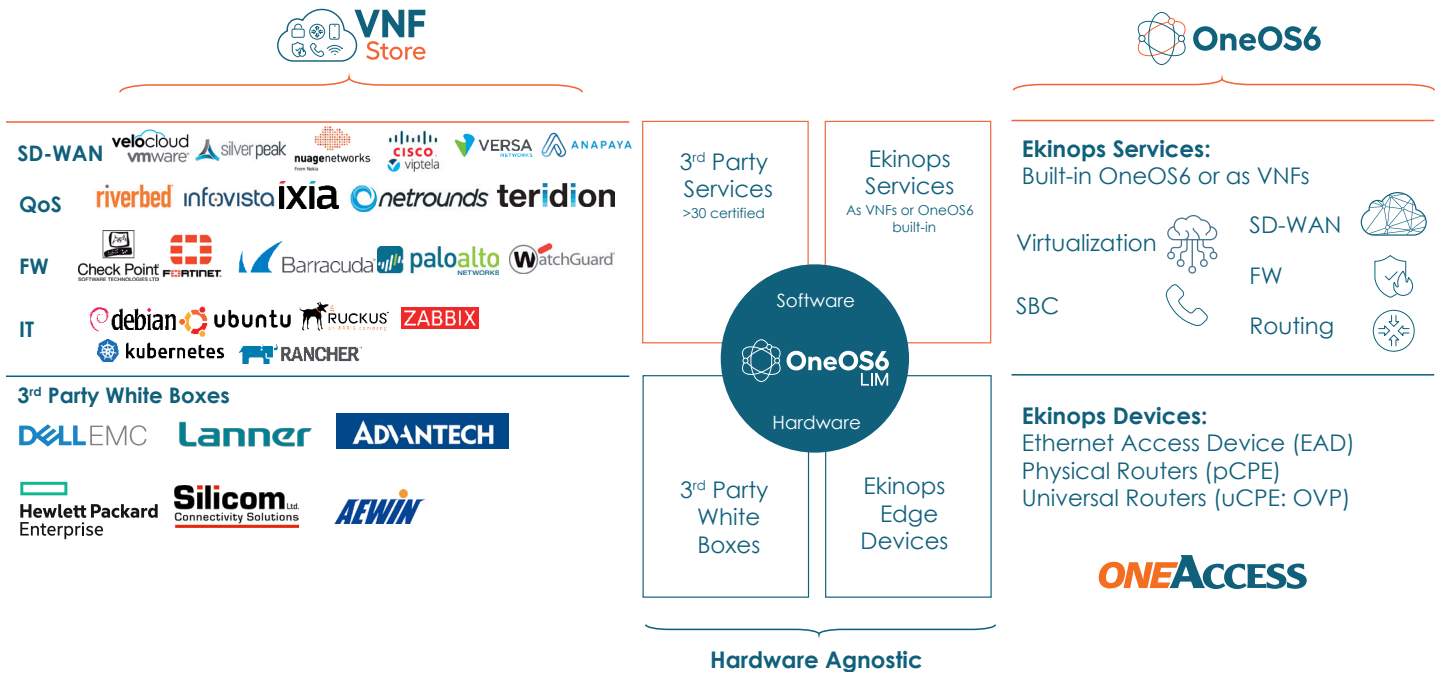
Offer SD-WAN services adapted to all Enterprise use cases and profiles, avoiding service disruptions and expensive roll-outs.

**Solution:**

Leverage **Compose Services** "SD-WAN Xpress" for SMBs and Point of Sales. Leverage OneAccess appliances with all interfaces required, delegate management to enterprises and / or channels through **Compose Management** solution named Director.

# Compose Ecosystem

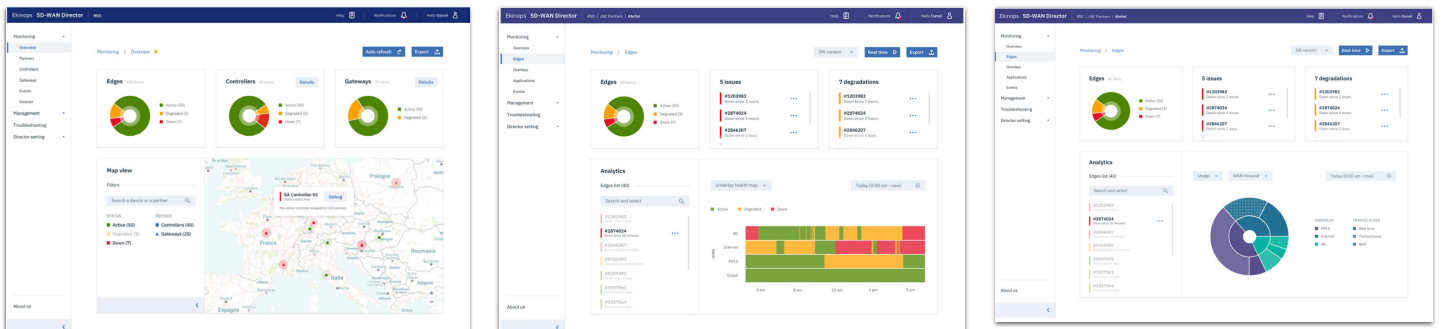
The Compose ecosystem rests on the high level of flexibility of OneOS6.  
 On the hardware side, OneOS6 is compatible with all Ekinops platforms as well as main white boxes vendors.  
 On the software side, many services are "OneOS6 Built-in", which means there is no need for additional VNFs.  
 At the same time, because OneOS6 philosophy is to be open, it can support several 3<sup>rd</sup> parties VNFs and deliver open API for management..



# Compose Director



The Compose management layer, called "Director" for Access Networks, is a central platform, multi-tenant at 2 levels, offering a lot of flexibility for channels and enterprises delegation. It is also the friendly UI for End enterprises and channels in order to configure networks services and make networks smart.



## About Ekinops



Ekinops is a leading provider of open, trusted and innovative network connectivity solutions to service providers around the world. Our programmable and highly scalable solutions enable the fast, flexible, and cost-effective deployment of new services for both high-speed, high-capacity optical transport as well as virtualization-enabled managed enterprise services.

Our product portfolio consists of three highly complementary product and service sets: EKinOPS360, OneAccess and Compose.

- EKinOPS360 provides optical transport solutions for metro, regional and long-distance networks with WDM for high-capacity point-to-point, ring, and optical mesh architectures, and OTN for improved bandwidth utilization and efficient multi-service aggregation.
- OneAccess offers a wide choice of physical and virtualized deployment options for access network functions.
- Compose supports service providers in making their networks software-defined with a variety of software management tools and services, including the scalable SD-WAN Xpress and SixSq Edge-to-Cloud solutions.

As service providers embrace SDN and NFV deployment models, Ekinops enables future-proofed deployment today, enabling operators to seamlessly migrate to an open, virtualized delivery model at a time of their choosing.

A global organization, Ekinops (EKI) - a public company traded on the Euronext Paris exchange operates on four continents.

**EKinOPS360**  
*Dynamic Optical Transport*

**ONEACCESS**  
*Fast Network Virtualization*

 **COMPOSE**